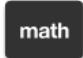


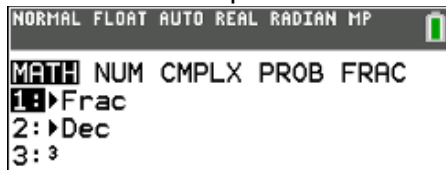
# Converting Decimals to Fractions (Basic) MathPrint View

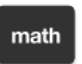

## Objectives:


- Use MATH > Frac to convert a rational number from decimal to fraction
- Convert a previous result from decimal to fraction

## Use MATH > Frac to convert a rational number from decimal to fraction

Press  to open a screen with five menus. You are automatically in the highlighted MATH menu.






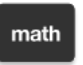


Pressing   will select option 1, > FRAC.

Press  again to look up the fraction.

**IMPORTANT:** The calculator is not doing a calculation, but looking up the decimal in a database.

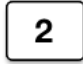



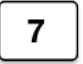
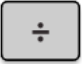

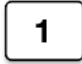
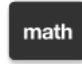


**NOTE:** Both > Frac and >Dec can also be accessed from the Fraction formatting menu, option 4.

**Example 1:** Convert .75 to a fraction.

Press these buttons:      

See this screen:

**Example 2:** Calculate and convert to fraction as one entry:  $\frac{2}{3} + \frac{7}{11}$

Press these buttons:           

See this screen:

## Convert a previous result from decimal to fraction

**Example 3:** Calculate without converting to fraction:  $\frac{1}{2} + \frac{5}{6}$

Press these buttons:        

See this screen:

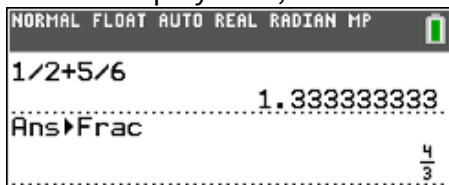
**Example 4:** Continue previous calculation and convert to fraction:

test A entry solve entry solve



Without pressing anything else first, press these buttons:

**NOTICE:** The calculator displays Ans, which means “previous answer”.



See this screen:

**REMEMBER:** Your calculator knows and uses the correct order of operations.

**NOTE:** MathPrint calculators also have tools for formatting fractions.

## Try It!

Calculate and write answer as fraction or an integer, not a decimal.

1)  $\frac{1}{3} + \frac{7}{8} \left( \frac{5}{6} - \frac{1}{9} \right)$

4)  $\frac{1 - \frac{2}{5}}{\frac{5}{4} + \frac{3}{8}}$

6)  $\frac{2}{3} - 7.25 + \frac{4}{5}(9)$

9)  $\frac{4(-5+2)}{3} - \frac{-5(3-8)}{6-(-7)}$

2)  $3 \left( \frac{5}{7} - \frac{1}{3} \cdot \frac{8}{9} \right)$

5)  $\left( \frac{4}{9} \right)^2 - \left( \frac{2}{5} \right)^2$

7)  $\frac{4^2}{9} - \frac{2^3}{5}$

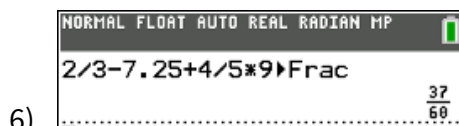
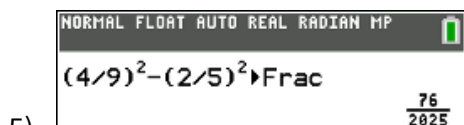
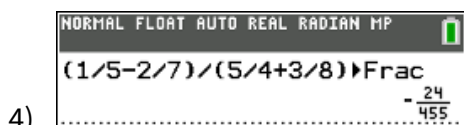
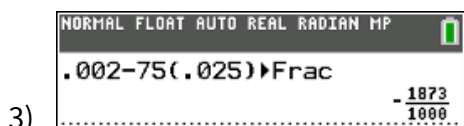
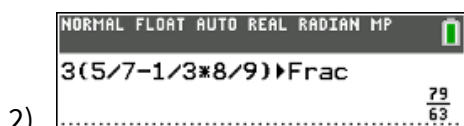
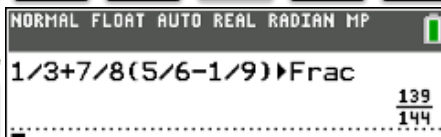
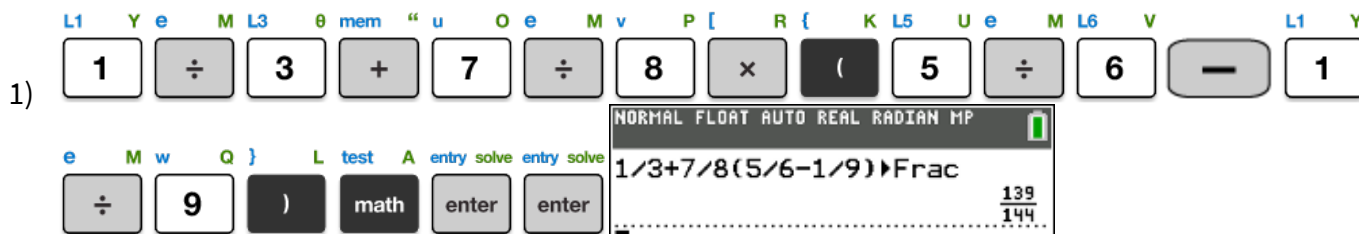
10)  $\frac{\frac{1}{4} \cdot 15 - 3}{7 + \frac{1}{3} \cdot 8}$

3)  $0.002 - 75(0.025)$

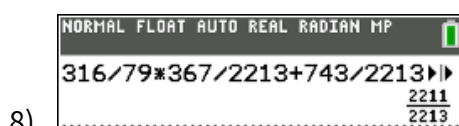
5)  $\left( \frac{4}{9} \right)^2 - \left( \frac{2}{5} \right)^2$

8)  $\frac{316}{79} \cdot \frac{367}{2213} + \frac{743}{2213}$

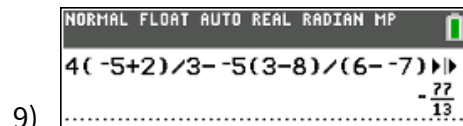
## Solutions



Don't forget right arrow to exit the exponent after 3!



If your GC couldn't find the fraction in #8, check if you can upgrade your operating system.



Be careful with negative vs. subtract!

